

Service Bulletin #TAS-131

Illustration for Service Kit TAS000004

Released December 2003

This is a high flow poppet component kit for TAS40, 55, 65 and 66 steering gears.

⚠ WARNING

If the TAS65 gear you are servicing has a ball bearing and ball race in the valve housing, remove them and call TRW for disposition. Do not rebuild the gear.

⚠ WARNING

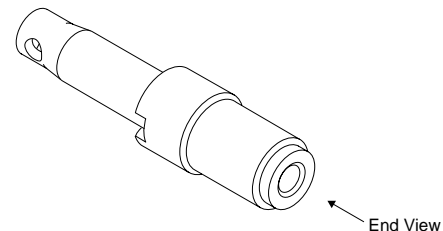
All steering mechanisms are safety critical items. As such, it is imperative that the instructions in the vehicle manufacturer's or TRW's latest published service manual are followed to the letter. Failure to observe the proper procedures, cautions and warnings may result in loss of steering.

Use the TRW TAS Service Manual to safely and properly replace these poppet components.

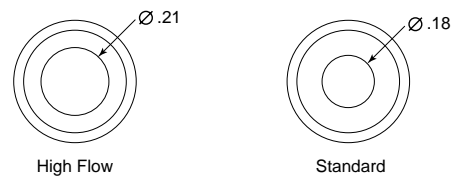
⚠ CAUTION

Do not reinstall the old style poppet design into the steering gear assembly. Replace all components with the new style poppet design as shown below.

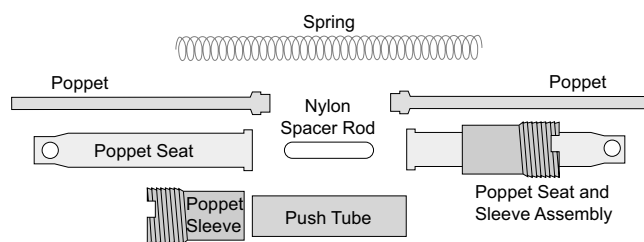
This TRW Commercial Steering Systems' service bulletin has been written to help you repair commercial vehicles more efficiently. This bulletin should not replace your manuals; you should use them together. These materials are intended for use by properly trained, professional mechanics, NOT "Do-it-yourselfers". You should not try to diagnose or repair steering problems unless you have been trained, and have the right equipment, tools and know-how to perform the work correctly and safely.



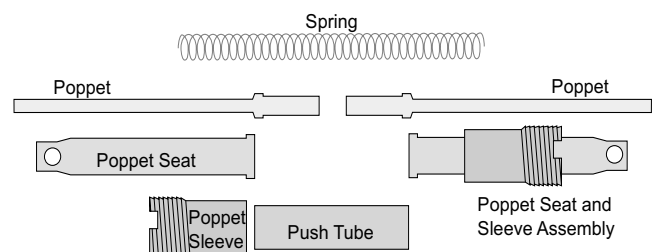
Poppet Design Differences



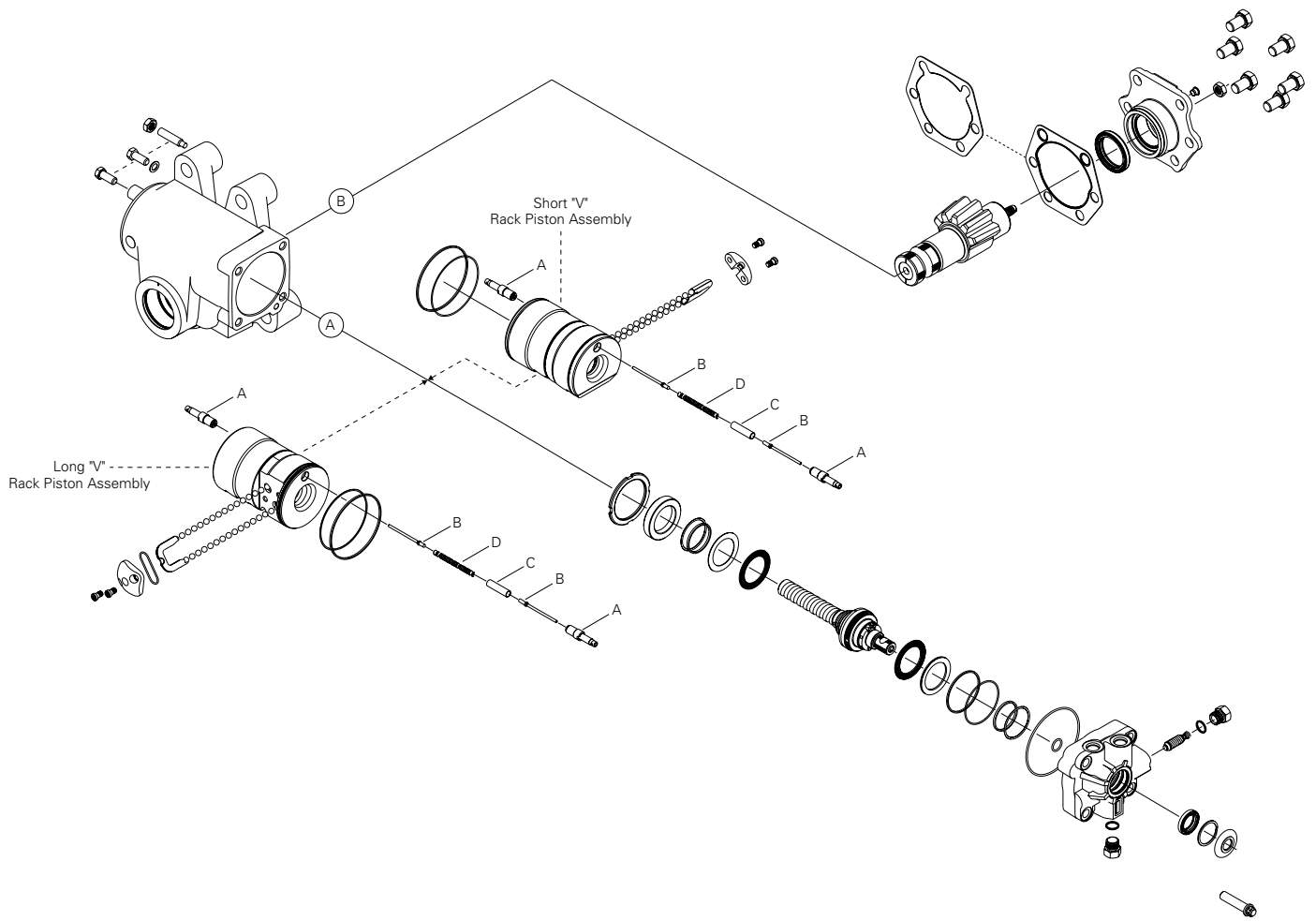
Old Poppet Design*



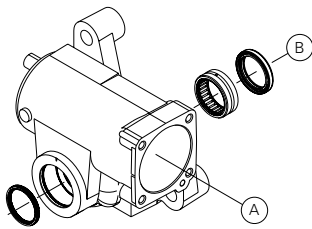
New Poppet Design



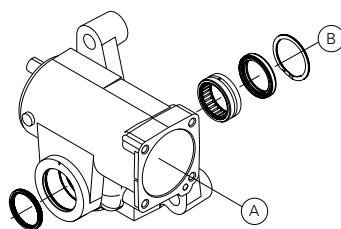
*All of these items are to be removed and discarded. Replace with items provided in the kit.



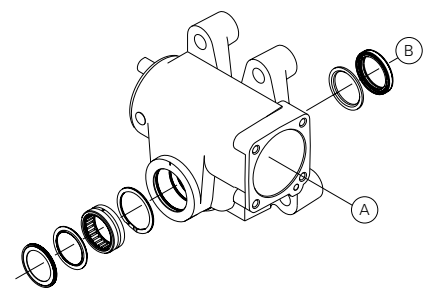
Step Bore w/ Hook Groove



Step Bore w/ Retaining Ring



Standard



Item	Description	Part Number
A	Poppet Seat & Sleeve (2)	409118-B2
B	Poppet Stem (2)	040248
C	Push Tube	080154
D	Spring	401662

The part numbers are for reference only, they cannot be purchased individually.

TRW Commercial Steering Systems

P.O. Box 60
 Lafayette, IN 47902
 Phone: 765.423.5377
 Fax: 765.429.1868