

## TRW Automotive Commercial Steering Systems

### Service Procedure # COL-203

#### Navistar Global Column Locking Adjustment

June 2012

**NOTE** This service procedure applies to TRW Global Steering Column equipped with a handle actuated lock mechanism.

**NOTE** Take appropriate safety measures before beginning this procedure.

#### Tools Required

- 2 - 9/16" Wrenches

#### Column Holding Force Test

1. Unlock the adjustment handle and place the column in the full up and away position. Lock the handle leaving the column in the full up and away position. Figure 1
2. While seated with hands at the 10 and 2 O'clock position on the steering wheel. Pull the wheel towards you with a force of approximately 120 lb. This test is to verify the column will remain in the locked position indicating appropriate holding force. Figure 2

**NOTE** Gradually apply force to the wheel. **DO NOT** jerk on the steering wheel.

3. If the column does not remain in the locked position with the applied reasonable force expected in normal operation (120 lb.), follow instructions listed below for adjustment method used.

#### Adjustment - Tightening the Lock Nut

1. Securing the head end of the (passenger side) through bolt with a 9/16" wrench, advance the lock nut on the handle side of the column 1/8th of a turn. Figure 3
2. After advancing the lock nut, repeat Column Holding Force Test.
  - If the column passes the holding force test above, proceed to step 5.
  - If the column DOES NOT pass the holding force test above, proceed to step 4.

*This TRW Commercial Steering Systems' service procedure has been written to help you repair commercial vehicles more efficiently. This procedure should not replace your manuals; you should use them together. These materials are intended for use by properly trained, professional mechanics, NOT "Do-it-yourselfers". You should not try to diagnose or repair steering problems unless you have been trained, and have the right equipment, tools and know-how to perform the work correctly and safely.*



Figure 1



Figure 2

4. If the column does not pass the holding force test after initial adjustment, tighten the lock nut one additional 1/8th turn and perform Column Holding Force Test. Repeat until the column passes the Column Holding Force test.
5. Once the steering column holds position test the lock mechanism to ensure that force required to actuate the adjustment handle is not excessive. (As the lock mechanism is tightened, the handle will become harder to operate). Figure 4
  - If the handle is difficult to actuate continue to step 6.
  - If the handle is easily actuated proceed to step 7.
6. Back the adjustment nut off 1/8th turn at a time until the handle will release and lock with reasonable force while the column maintains a locked position with reasonable force applied.
7. Install steering column shrouds according to OEM instructions.

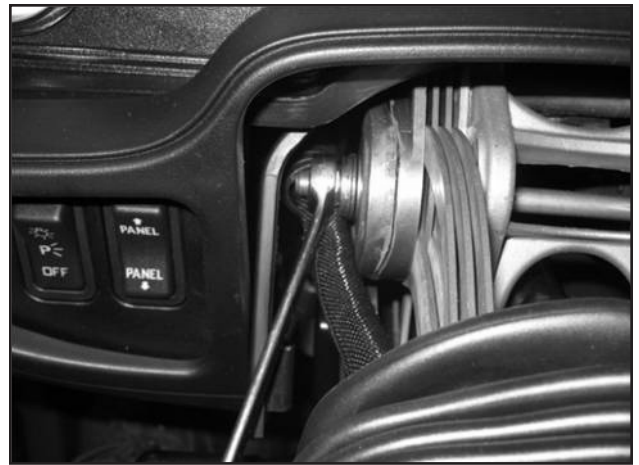
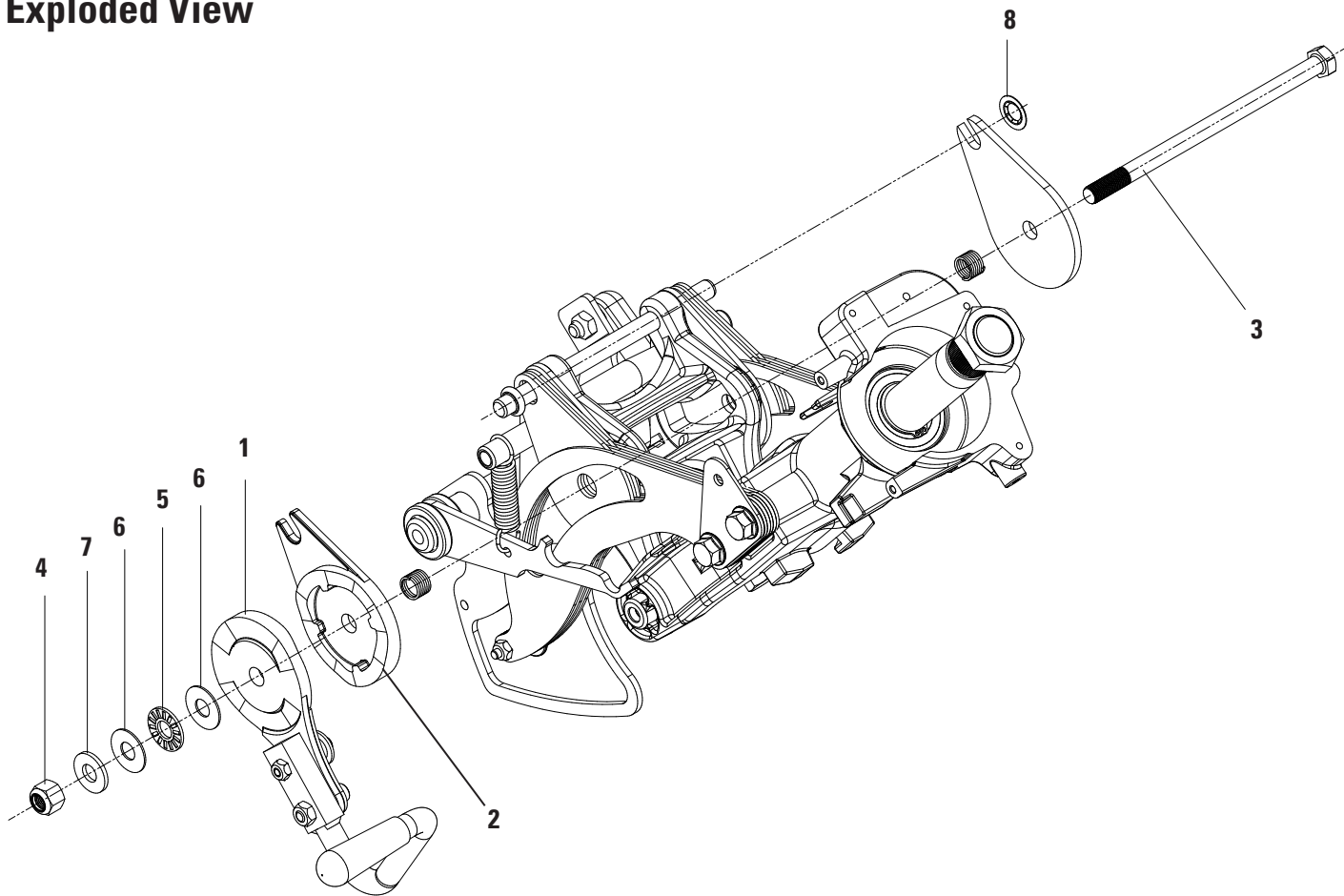


Figure 3



Figure 4

# Exploded View



| No. | Description               |
|-----|---------------------------|
| 1   | Handle and Cam Assembly   |
| 2   | Cam - Inside Locking      |
| 3   | Through Bolt              |
| 4   | Lock Nut                  |
| 5   | Thrust Bearing            |
| 6   | Thrust Bearing Washer (2) |
| 7   | Washer                    |
| 8   | Push Nut                  |

**TRW Commercial Steering Systems**

P.O. Box 60  
Lafayette, IN 47902  
Phone: 765.423.5377  
Fax: 765.429.1868