

## TRW Automotive Commercial Steering Systems

### Service Procedure # COL-187

#### Detent Bar Replacement Procedure

April 2008

#### NOTE

Take appropriate safety measures before beginning this procedure.

#### Tools Required

- Flat Head Screwdriver
- 5/32" Allen Wrench
- 3/8" Wrench

#### Detent Bar Replacement

1. Remove steering column shroud according to vehicle manufacturer's instructions.
2. Place the column in its fully extended and downward position and lock it in position. This will expose the bolt and nut required to be removed on the Handle. **Figure 1**
3. Remove the tension spring from the tapered rod (located on the Mounting Bracket) and also from the hole located on the Detent Bar. **Figure 2**
4. Using a 3/8 " wrench and a 5/32 " Allen wrench, remove the large 10 mm OD washer, 1/2" OD roller bearing, small 3/16" washer, # 10-24 bolt with accompanying nut. The Detent Bar will relax and rest on the bolt on the inner side of the Handle. Move the Detent Bar off the Handle bolt to allow it to hang freely on the cylindrical rod. **Figure 3**
5. Remove both lower mounting bolts and swing the bottom portion out to gain access to the rear mounting portion of the detent bar and its bushings. **Figure 4**
6. Remove the nylon detent bushing from the cylindrical rod and pull the Detent Bar outwards away from the column.
7. Install the new Detent Bar on the cylindrical rod followed by pressing the nylon bushing on the rod. Using a 7/8 or 1" socket, lightly press the bushing on the rod using a hammer. The bushing should be positioned no more than 1/4" from the end of the rod.

#### Figure 5

*This TRW Commercial Steering Systems' service procedure has been written to help you repair commercial vehicles more efficiently. This procedure should not replace your manuals; you should use them together. These materials are intended for use by properly trained, professional mechanics, NOT "Do-it-yourselfers". You should not try to diagnose or repair steering problems unless you have been trained, and have the right equipment, tools and know-how to perform the work correctly and safely.*

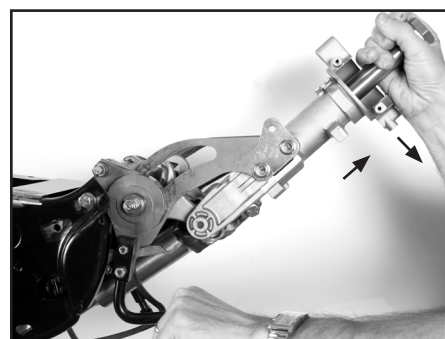


Figure 1

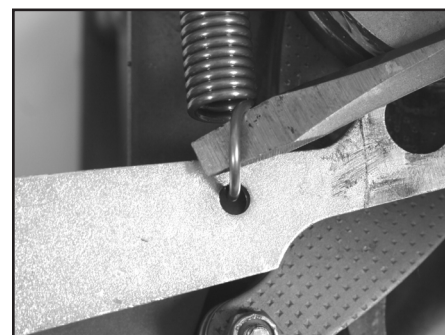


Figure 2



Figure 3

8. Swing the column back into place and reinstall the lower mounting bolts torquing them to the vehicle manufacture's specifications.
9. Install new M5 washer with a new roller bearing, new large 10 mm OD washer, #10-24 bolt and nut to the block part of the Handle assembly and to the outer cam. Torque to 35-53 in-lbf ( 4-6 N-m).
10. Install new tension spring, pulling the Detent Bar up against the roller bearing allowing the Detent Bar to rest on the # 10 bolt. Attach a hook end of the spring through the hole on the Detent while securing the opposite end hook of the spring to the tapered rod on the Mounting Bracket. Position spring hook approximately ½ " from the end of the rod.
11. Reinstall steering column shroud according to vehicle OEM instructions..

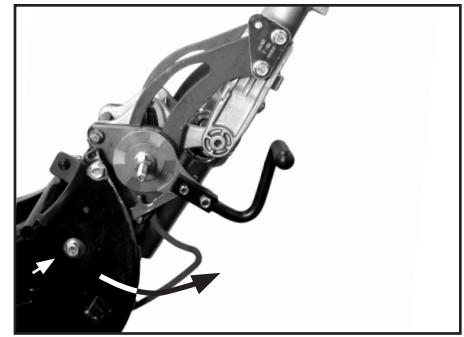
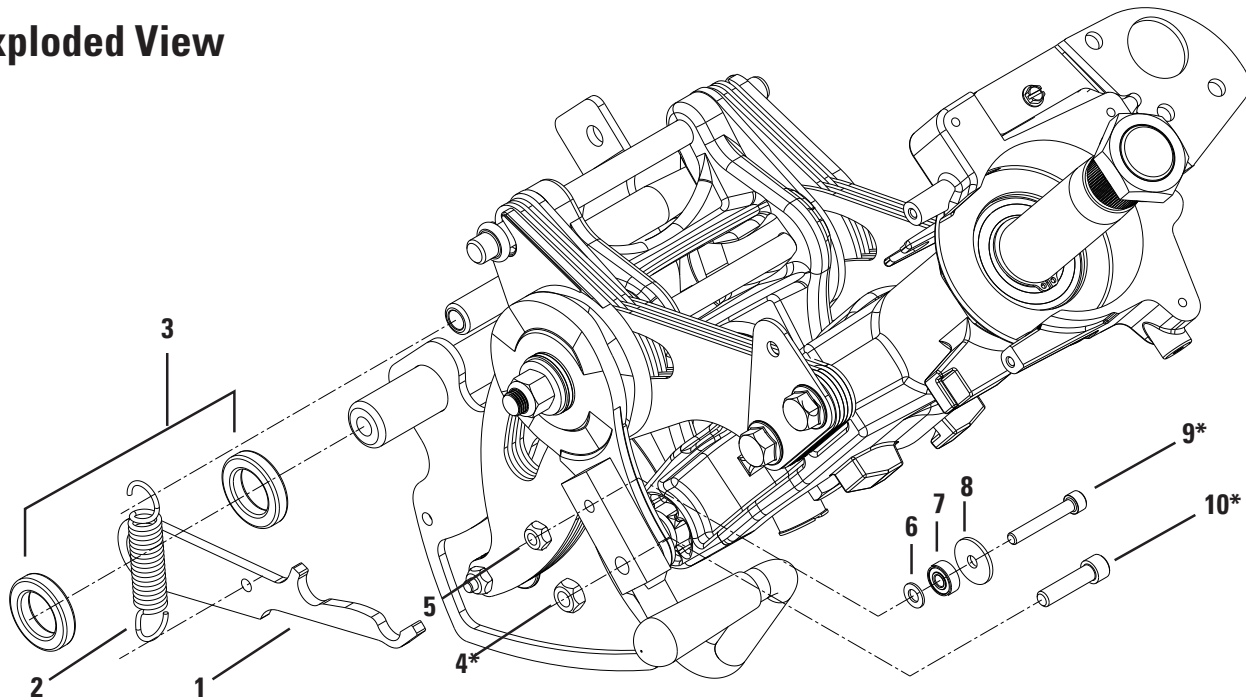


Figure 4



Figure 5

## Exploded View



## Service Parts List

No.	Description	Part No.
1	Detent Bar	475440
2	Detent Tension Spring	401764
3	Detent Bushing	061021
4	Hex Lock Nut	*
5	Prevailing Torque Hex Nut	027025
6	Washer	028570
7	Bearing	051048
8	Washer	028569
9	Socket Head Cap Screw	*
10	Socket Head Cap Screw	*

\* These parts are not included in the service kit.

**TRW Commercial Steering Systems**

P.O. Box 60  
Lafayette, IN 47902  
Phone: 765.423.5377  
Fax: 765.429.1868