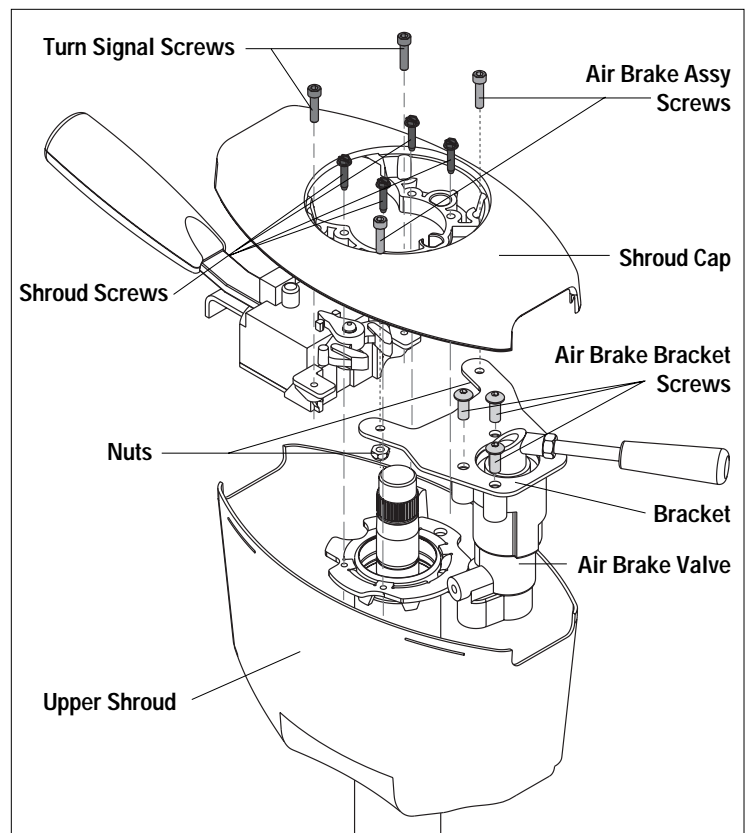


Service Bulletin #COL-148**CF028 Air Brake Retro-Fit**
Works with Bendix P/N 5001225 and 5002409**Kit #SK000253**

Released May, 2000

This TRW Commercial Steering Division service bulletin has been written to help you repair commercial vehicles more efficiently. This bulletin should not replace your manuals; you should use them together. These materials are intended for use by properly trained, professional mechanics, NOT "Do-it-yourselfers". You should not try to diagnose or repair steering problems unless you have been trained, and have the right equipment, tools and know-how to perform the work correctly and safely.

1. Squeeze the upper shroud and allow it to slide down the column.
2. Remove the turn signal switch from the shroud cap, and disconnect wiring. Save these screws.
3. Remove the shroud cap by loosening and removing four screws. Save these screws. Disconnect the horn contact wire and remove with the shroud cap.
4. Slide the upper shroud up and off of the column. Dispose of the two shroud pieces.
5. Slide the new upper shroud over the column.
6. Connect the new bracket to your air brake valve using three screws. (Air Brake Bracket Screws).
7. Connect the air brake valve and bracket to the new shroud cap using two screws and nuts provided in this kit. (Air Brake Assy. Screws & Nuts).
8. Reconnect the turn signal switch to the upper shroud using the screws which were removed. (Turn Signal Screws).
9. Install the horn contact and route the wire.
10. Route air lines and wiring through the holes in the upper shroud. Make the connections to the air brake valve, turn signal switch and horn contact.
11. Connect the shroud cap assembly to the column using the four which were removed and saved. (Shroud Screws).
12. Raise the upper shroud into position, and snap it into place in the shroud cap.

**TRW Commercial Steering Systems**P.O. Box 60
Lafayette, IN 47902
Phone: 765.423.5377
Fax: 765.429.1868