

Service Procedure #COL-143

CA & CT Series Bearing Gasket Replacement. Service Kit #034075-X1

Revised June, 2005

This TRW Commercial Steering Division service procedure has been written to help you repair commercial vehicles more efficiently. This procedure should not replace your manuals; you should use them together. These materials are intended for use by properly trained, professional mechanics, NOT "Do-it-yourselfers". You should not try to diagnose or repair steering problems unless you have been trained, and have the right equipment, tools and know-how to perform the work correctly and safely.

1. Remove the steering wheel. Tilt the column toward the actuator handle. Also telescope the column up fully to partially unload the telescope spring on tilt telescope (CA) columns.
2. Remove the 2-piece upper shroud (3) by removing four mounting screws (1), and twisting the shroud off over the input shaft.
3. Note the position of the ground wire (5). Remove four self-tapping screws (4) and ground wire (5) from the tilt housing (8) and bearing cap (6).
4. Remove the bearing cap (6), noting the path of the yellow horn contact wire (if present).
5. Unseat the bearings (10) from their grooves, and remove both rubber gaskets (7).
6. Clean the bearing grooves on both the tilt housing (8) and the bearing cap (6) thoroughly. Also remove all grease from the outside of the bearings (10).
7. Assemble the two new gaskets squarely on the bearing surfaces without lubricant.
8. Apply adhesive supplied in the kit as follows: With the gasket in position on the bearing, lift one edge of the gasket and slide the nozzle of the applicator between the gasket and bearing to the center line. Apply a line of adhesive around the OD of the bearing. Repeat with the remaining gasket & bearing. The adhesive bonds instantly.
9. Make sure the ground terminal (9) is in place in the tilt housing, and lightly lubricated with dielectric grease. Seat the bearings in the tilt housing grooves. Make sure the bearing gaskets are straight and seated properly.
10. Install the bearing cap (6) with the pilot up, so it matches with the pilot lip on the tilt housing. If the yellow horn wire is present, make sure it runs along the assigned trail, and is not pinched between the cap and the tilt housing.
11. Start the four self-tapping screws (4) by hand, placing the ground wire over a bolt in the same position from which it was removed. Torque to **75-80 lbf•in.**
12. Reinstall the upper shroud (3), reseat the yellow wire's contact (2), and torque the mounting screws (1) to **25-30 lbf•in.**
13. Replace the steering wheel and torque the bolt to manufacturer's specifications.

NOTE

If the yellow horn contact wire (2) is present, remove it from its seat before removing the upper shroud.

CAUTION

CA (Tilt telescope) columns: Do not pull the upper tube of the rotating group out of the column, or lift it enough to unseat it from the lower tube.

The upper and lower tubes are lobed and fit together properly only in one position. Fitting them back improperly, or with the use of any force could damage the column.

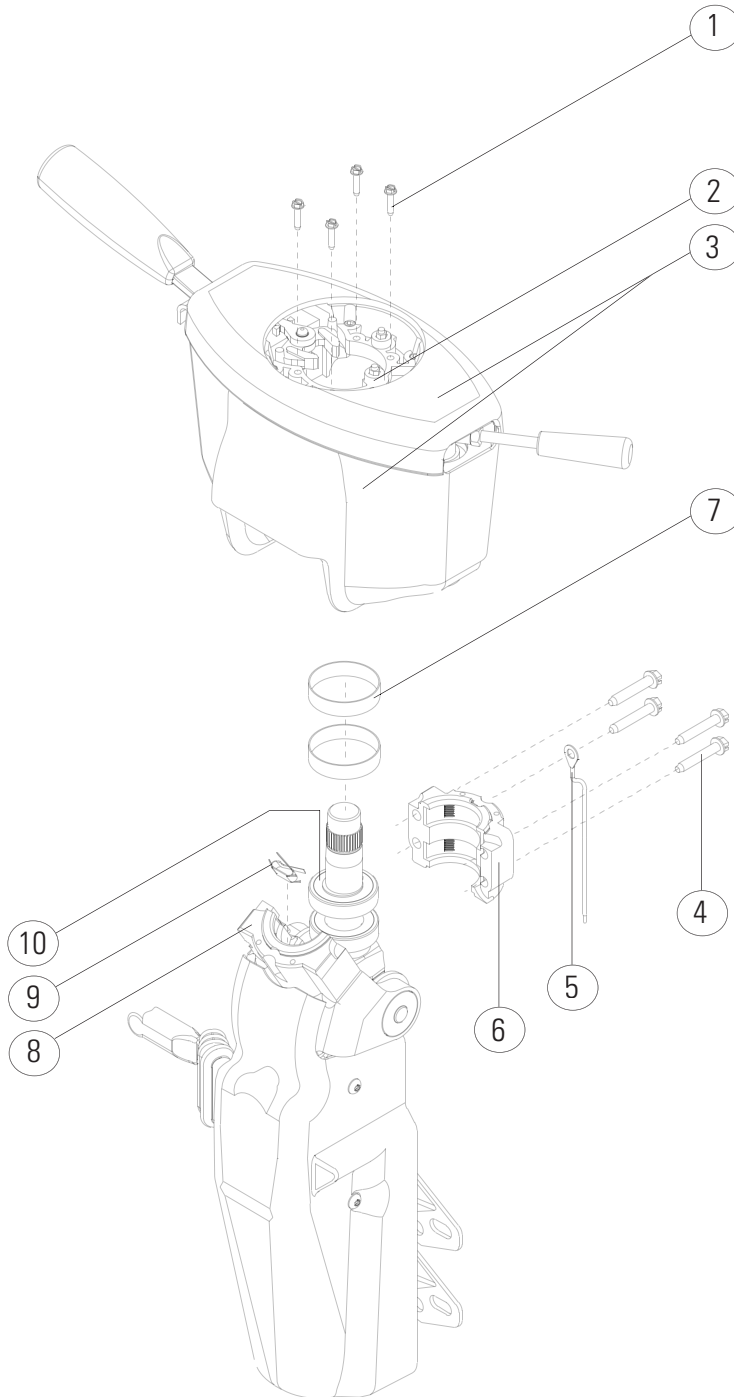
If the tubes do become separated, attempt to fit them back together, without the use of force, in each position, until the upper tube moves smoothly and evenly on the lower tube.

NOTE

If the 2-piece upper shroud came apart during disassembly, snap it back together, making sure the bulge in the lower part will fit over the actuator handle on the column.

No. Description

- ① Mounting screws (4)
- ② Yellow contact wire
- ③ Upper shroud (2-pc)
- ④ Self-tapping screws (4)
- ⑤ Ground wire
- ⑥ Bearing cap
- ⑦ Bearing gaskets (2)
- ⑧ Tilt housing
- ⑨ Ground terminal
- ⑩ Bearings (2)

**TRW Commercial Steering Division**

P.O. Box 60
 Lafayette, IN 47902
 Phone: 765.423.5377
 Fax: 765.429.1868

