

## Service Bulletin #COL-142

### Intermediate Column Boot Replacement


#### Kit #SK000207

Revised November 2001

*This TRW Commercial Steering Division service bulletin has been written to help you repair commercial vehicles more efficiently. This bulletin should not replace your manuals; you should use them together. These materials are intended for use by properly trained, professional mechanics, NOT "Do-it-yourselfers". You should not try to diagnose or repair steering problems unless you have been trained, and have the right equipment, tools and know-how to perform the work correctly and safely.*

#### Disassembly

1. Disconnect the intermediate column. Take it to a clean work surface.
2. Remove the clamps from both ends of the boot using pliers or other suitable tool.
3. Separate the two parts of the column by sliding the column's inner tube out of the outer tube.
4. Remove and discard the boot, seal and clamps.
5. Wipe off the inner tube using a clean cloth only.

 **CAUTION** Wipe tube with a clean cloth only, do not use cleansers. Use of cleanser could damage the column.

#### Assembly

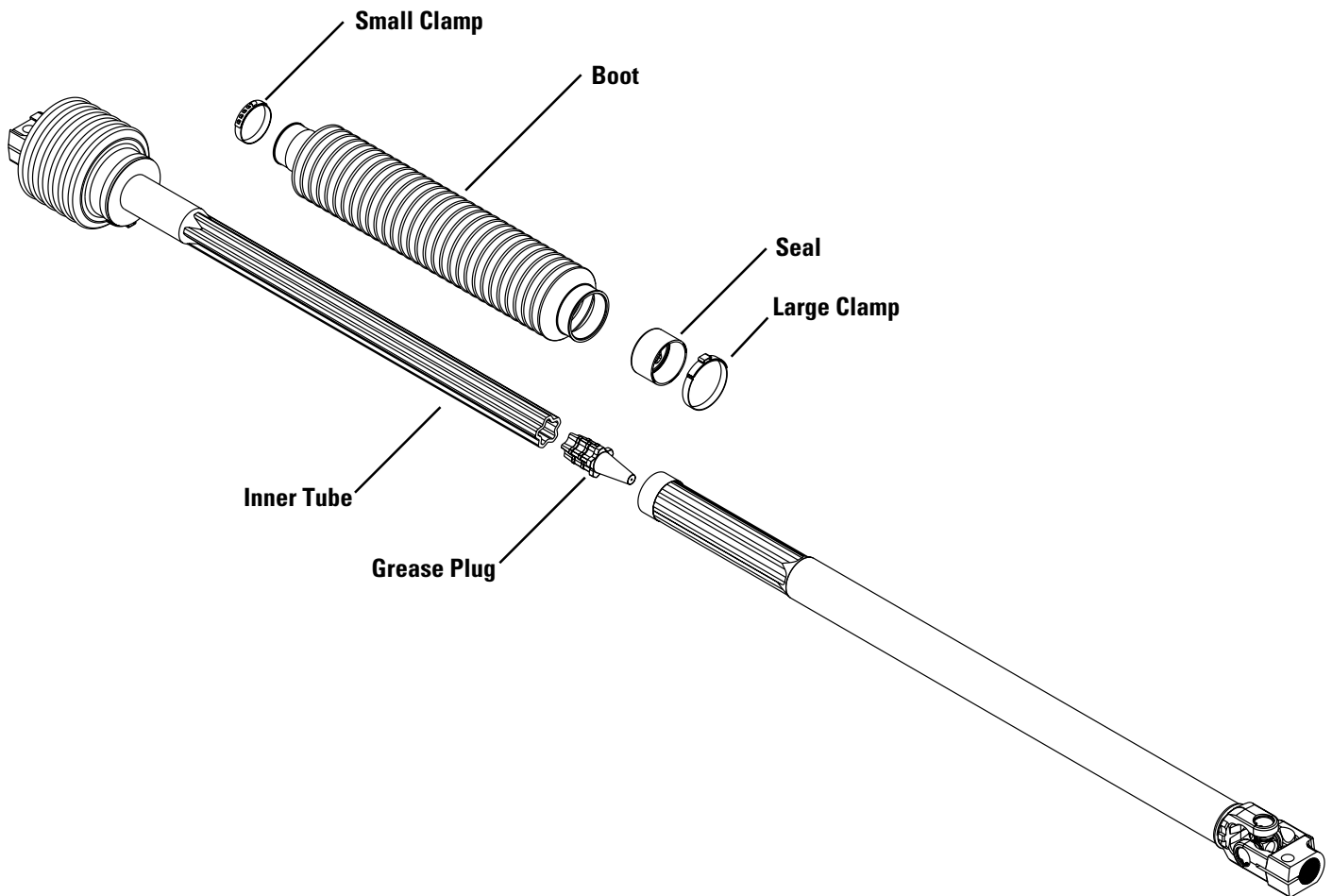
1. Install grease plug (star-shaped end) into end of inner tube. Push plug firmly until shoulder rests against end of tube. Cone portion of plug will stick out.
2. Slide the new small clamp onto the inner tube.
3. Slide the new boot onto the inner tube, small diameter end first.
4. Position the small clamp over the boot and tighten.
5. Slide the new seal (positioned as shown in artwork on reverse) onto the inner tube.
6. Lightly lubricate the area of the inner tube below the seal, with the grease provided, and place the remaining grease in the outer tube.
7. Slide the new large clamp onto the outer tube.
8. Align the arrows on the tubes, and slide the tubes together.
9. Work the seal over the round collar on the outer tube.
10. Slide the large end of the boot over the seal, with the boot overhanging the seal slightly. Position the clamp on the boot seal area, about 1/8" from the edge of the seal and tighten.

11. Stroke the column to verify proper operation.

**CAUTION** Don't over-extend the column.  
Over-extension may damage the boot or separate the inner tube from the outer tube.

12. Reinstall the column onto the vehicle, tightening pinch bolts to vehicle manufacturer's specifications.

**NOTE** TRW strongly recommends the use of new pinch bolts.



**TRW Commercial Steering Systems**

P.O. Box 60  
Lafayette, IN 47902  
Phone: 765.423.5377  
Fax: 765.429.1868

