

Service Bulletin #COL-127

Intermediate Column Boot Replacement

Kit #SK000186

Released February, 1996

This TRW Commercial Steering Division service bulletin has been written to help you repair commercial vehicles more efficiently. This bulletin should not replace your manuals; you should use them together. These materials are intended for use by properly trained, professional mechanics, NOT "Do-it-yourselfers". You should not try to diagnose or repair steering problems unless you have been trained, and have the right equipment, tools and know-how to perform the work correctly and safely.

Disassembly

1. Disconnect the intermediate column. Take it to a clean work surface.
2. Remove the clamps from both ends of the boot using pliers or other suitable tool.
3. Separate the two parts of the column by sliding the column's inner tube out of the outer tube.
4. Remove and discard the boot, adapter, seal and clamps.
5. Wipe off the inner tube using a clean cloth only.

CAUTION Wipe tube with a clean cloth only, do not use cleansers. Use of cleanser could damage the column.

Assembly

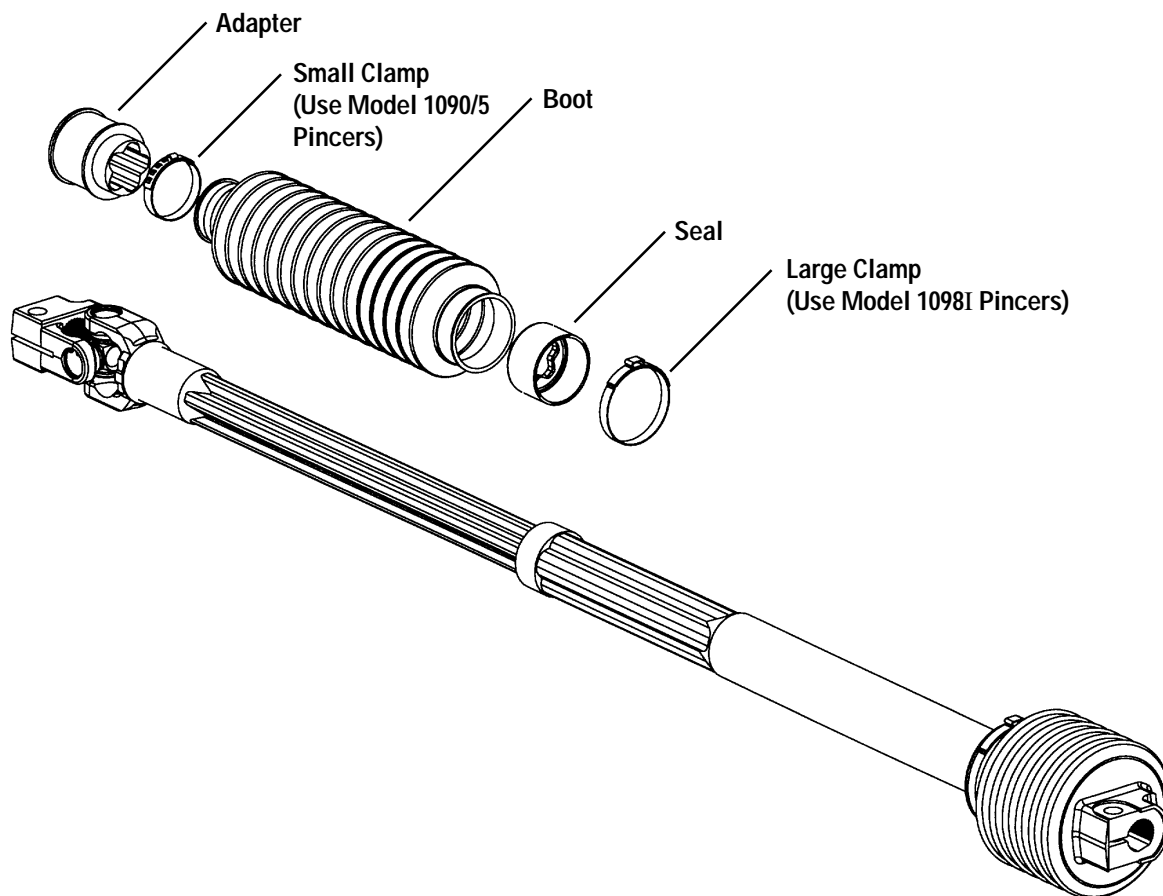
1. Slide the adapter onto the inner tube, with the larger diameter toward the u-joint. Align the arrow on the adapter with the arrow on the inner tube.
2. Slide the small clamp onto the inner tube.
3. Slide the boot onto the inner tube, small diameter end first.
4. Seat the adapter in the boot on the small diameter end of the boot.
5. Position the small clamp over the boot/adapter and tighten using Oetiker Model 1090/5 Low Profile Pincers.
6. Slide the seal (positioned as shown in artwork on reverse) onto the inner tube.
7. Lightly lubricate the area of the inner tube below the seal, with the grease provided, and place the remaining grease in the outer tube.
8. Slide the large clamp onto the outer tube.
9. Align the arrows on the tubes, and slide the tubes together.

10. Work the seal over the round collar on the outer tube.
11. Slide the large end of the boot over the seal, with the boot overhanging the seal slightly. Position the clamp on the boot seal area, about 1/8" from the edge of the seal and tighten using Oetiker Model 1098I Straight Jaw Pincers.
12. Stroke the column to verify proper operation.

CAUTION	Don't over-extend the column. Over-extension may damage the boot or separate the inner tube from the outer tube.
----------------	---

13. Reinstall the column onto the vehicle, tightening pinch bolts to vehicle manufacturer's specifications.

NOTE	TRW strongly recommends the use of new pinch bolts.
-------------	---



TRW Commercial Steering Division
P.O. Box 60
Lafayette, IN 47902
Phone: 317.423.5377
Fax: 317.429.1868

TRW