

## Service Bulletin #COL-120

### CT Series Tilt Mechanism Replacement. Service Kits for Tilt Lock Service Assembly

Revised March, 2004

*This TRW Commercial Steering Systems' service bulletin has been written to help you repair commercial vehicles more efficiently. This bulletin should not replace your manuals; you should use them together. These materials are intended for use by properly trained, professional mechanics, NOT "Do-it-yourselfers". You should not try to diagnose or repair steering problems unless you have been trained, and have the right equipment, tools and know-how to perform the work correctly and safely.*

1. Remove the column from the vehicle. Remove the upper shroud (2) by removing four mounting screws (1), and twisting the shroud off over the input shaft.

Remove the handle cover (3); it may have to be cut off. Then remove four shroud screws (4), and the lower shroud (5).

2. Place the column in a vice, clamping on the mounting bracket flange.

Put the column in full tilt position (toward the mounting bracket).

3. Remove the prevailing torque lock nut (10) and washer (11). Lightly tap the shoulder screw (12) with a hammer to begin removal. Use a punch to complete the removal if necessary. (7/16" socket, 5/32" Allen.)
4. Drive the tilt pivot pin (13) on the other end of the tilt lock mechanism from the smaller hole toward the larger, with a punch. Maneuver the tilt lock mechanism (14) out the bottom of the base unit.
5. Position the new tilt lock mechanism (14) in the base unit so the lever is exposed through the window on the base unit and to the right of the actuator cam (19).

6. Align the tilt lock mechanism holes with the holes in the base unit, and replace the shoulder screw (12) with the threads on the outside of the base unit. Replace the washer (11) and prevailing torque lock nut (10). Torque the nut to **72-88 lbf•in.**
7. Replace the tilt pivot pin (13) through the other end of the tilt lock mechanism. Carefully line up the tilt pivot pin with the holes, and use a punch to tap the tilt pivot pin into place until it stops.

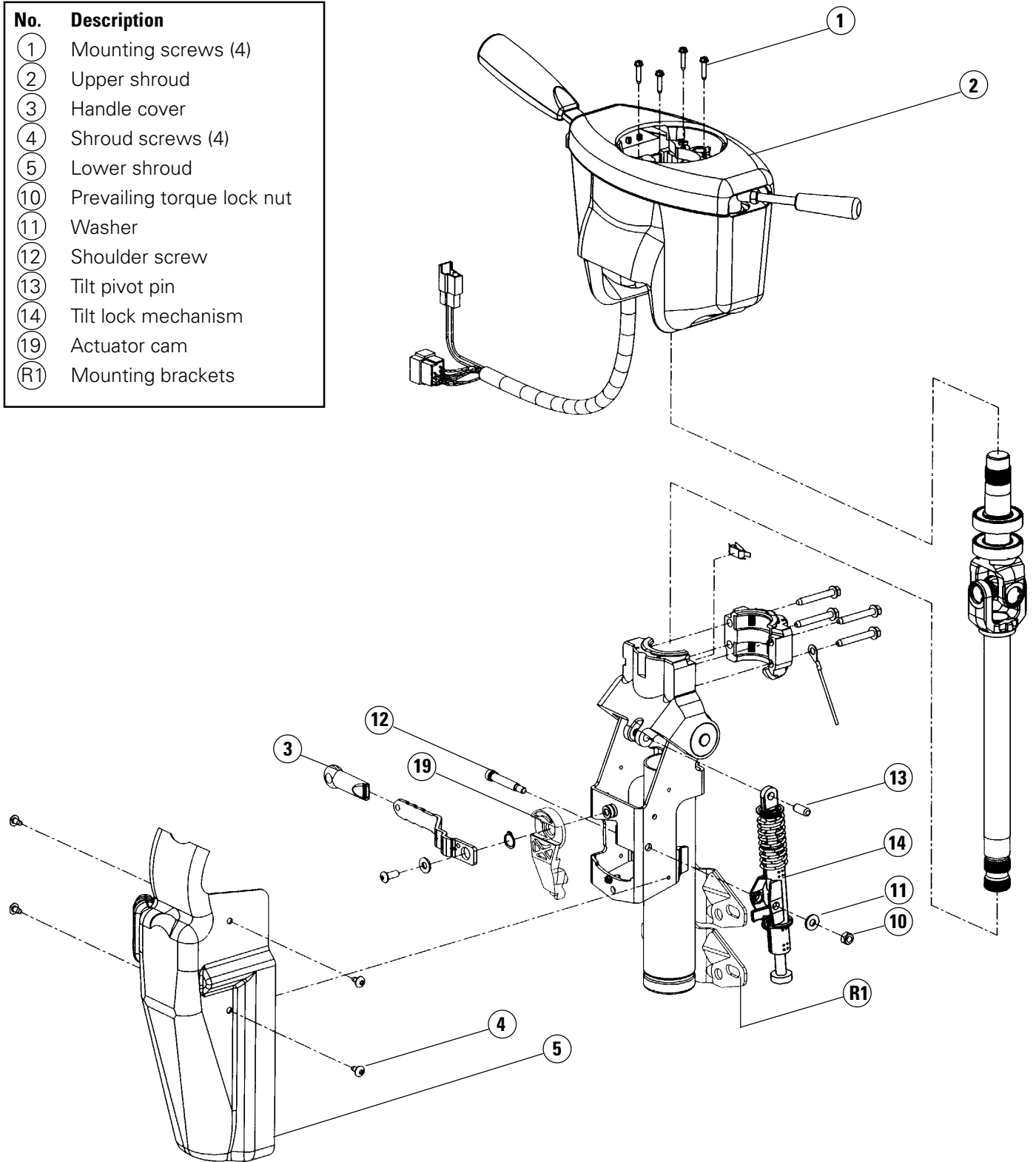
**CAUTION** The tilt pivot pin must be fully seated, not just pressed flush with the boss. If the tilt pivot pin is not seated properly, the tilt function may cease to operate.

8. Reinstall shrouding. Torque all shroud screws to **25-30 lbf•in.** Replace the handle cover (3). Reinstall the column in the vehicle. Torque mounting bolts to manufacturer's specifications.

**CAUTION** Handle the tilt lock mechanism carefully, the spring may be loaded.

# CT Series Column

No.	Description
①	Mounting screws (4)
②	Upper shroud
③	Handle cover
④	Shroud screws (4)
⑤	Lower shroud
⑩	Prevailing torque lock nut
⑪	Washer
⑫	Shoulder screw
⑬	Tilt pivot pin
⑭	Tilt lock mechanism
⑲	Actuator cam
R1	Mounting brackets



## TRW Commercial Steering Systems

P.O. Box 60  
 Lafayette, IN 47902  
 Phone: 765.423.5377  
 Fax: 765.429.1868

