

Service Bulletin #COL-114

CA & CT Series Ground Terminal Replacement. Service Kit #031107-S1

Released June, 1996
Electronic Version April, 1998

This TRW Commercial Steering Division service bulletin has been written to help you repair commercial vehicles more efficiently. This bulletin should not replace your manuals; you should use them together. These materials are intended for use by properly trained, professional mechanics, NOT "Do-it-yourselfers". You should not try to diagnose or repair steering problems unless you have been trained, and have the right equipment, tools and know-how to perform the work correctly and safely.

NOTE

This procedure can be done without removing the column from the vehicle. Remove the steering wheel, disconnect the wiring, and proceed with step 1.

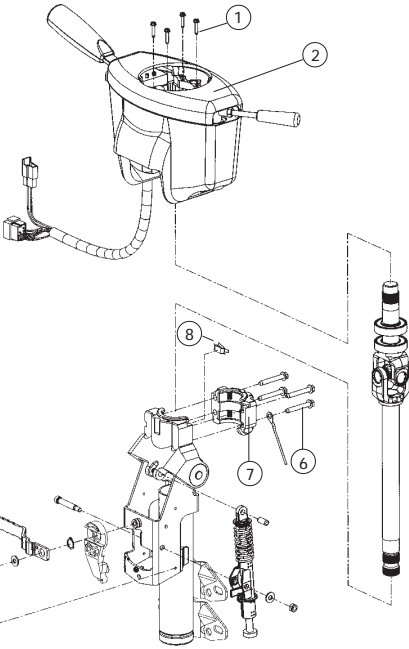
1. Remove the column from the vehicle. Remove the upper shroud (2) by removing four mounting screws (1), and twisting the shroud off over the input shaft.
2. Place the column in a vice, clamping on the mounting bracket flange.

Put the column in full telescope up position if working with a tilt-telescope column.
3. Remove four bolts (6) and the ground wire from the base unit and bearing cap. (3/8" socket.)
4. Remove the bearing cap (7).
5. Tilt away from mounting bracket, and unseat the bearings from their seat in the housing.
6. Remove the ground terminal (8) from its slot in the housing between the two bearing seats, by pressing the tangs.
7. Install the new ground terminal (8), and lubricate the contact points with the lubricant provided.
8. Seat the bearings in the tilt housing grooves. Make sure the gaskets are straight and seated properly.
9. Install the bearing cap (7) with the pilot lip up, so it matches with the pilot lip on the housing. Install four bolts (6), placing the ground wire over one bolt. Torque to **75-80 lbf•in.**
10. Reinstall the upper shroud (2), torque mounting screws (1) to **25-30 lbf•in.** Reinstall the column in the vehicle. Torque mounting bolts to manufacturer's specifications.

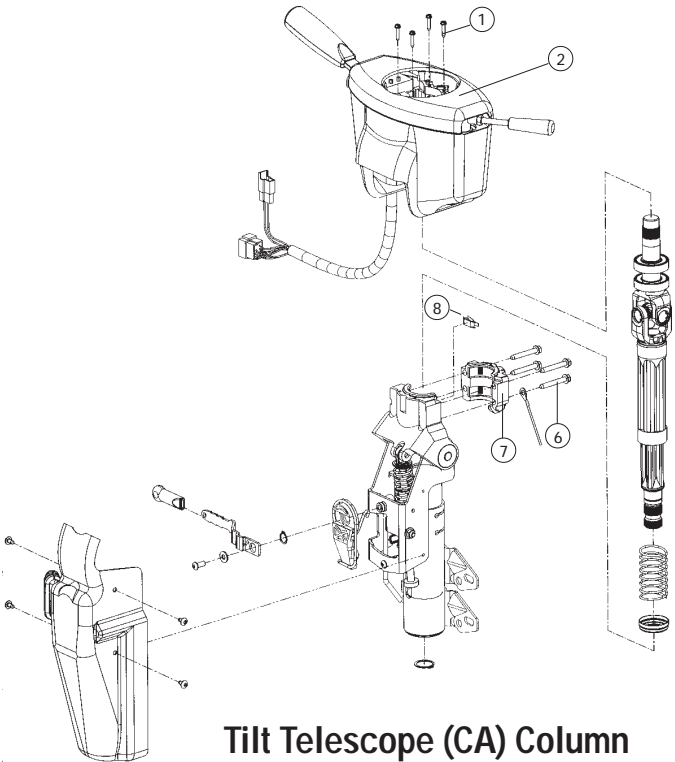
WARNING

Wear eye protection during this step, the upper rotating tube is under spring tension in the Tilt-Telescope column. If the column has not been telescoped fully, this assembly will spring upward.

No.	Description
①	Mounting screws (4)
②	Upper shroud
⑥	Bolts (4)
⑦	Bearing cap
⑧	Ground terminal



Tilt Only (CT) Column



Tilt Telescope (CA) Column

TRW Commercial Steering Division
 P.O. Box 60
 Lafayette, IN 47902
 Phone: 765.423.5377
 Fax: 765.429.1868

