

## Service Bulletin #COL-112

### Tilt Only Column Tilt Mechanism Replacement. Service Kit #499045-S1

Released April 21, 1995

*This TRW Commercial Steering Division service bulletin has been written to help you repair commercial vehicles more efficiently. This bulletin should not replace your manuals; you should use them together. These materials are intended for use by properly trained, professional mechanics, NOT "Do-it-yourselfers". You should not try to diagnose or repair steering problems unless you have been trained, and have the right equipment, tools and know-how to perform the work correctly and safely.*

1. Remove the steering wheel lock nut and steering wheel, if not already removed, using a steering wheel puller.

Remove the turn signal switch if helpful.

2. Place the column in a soft-jawed vice, clamping on the mounting bracket flange. This procedure can also be done on the vehicle.

Put the column in full tilt position (toward the mounting bracket or windshield).

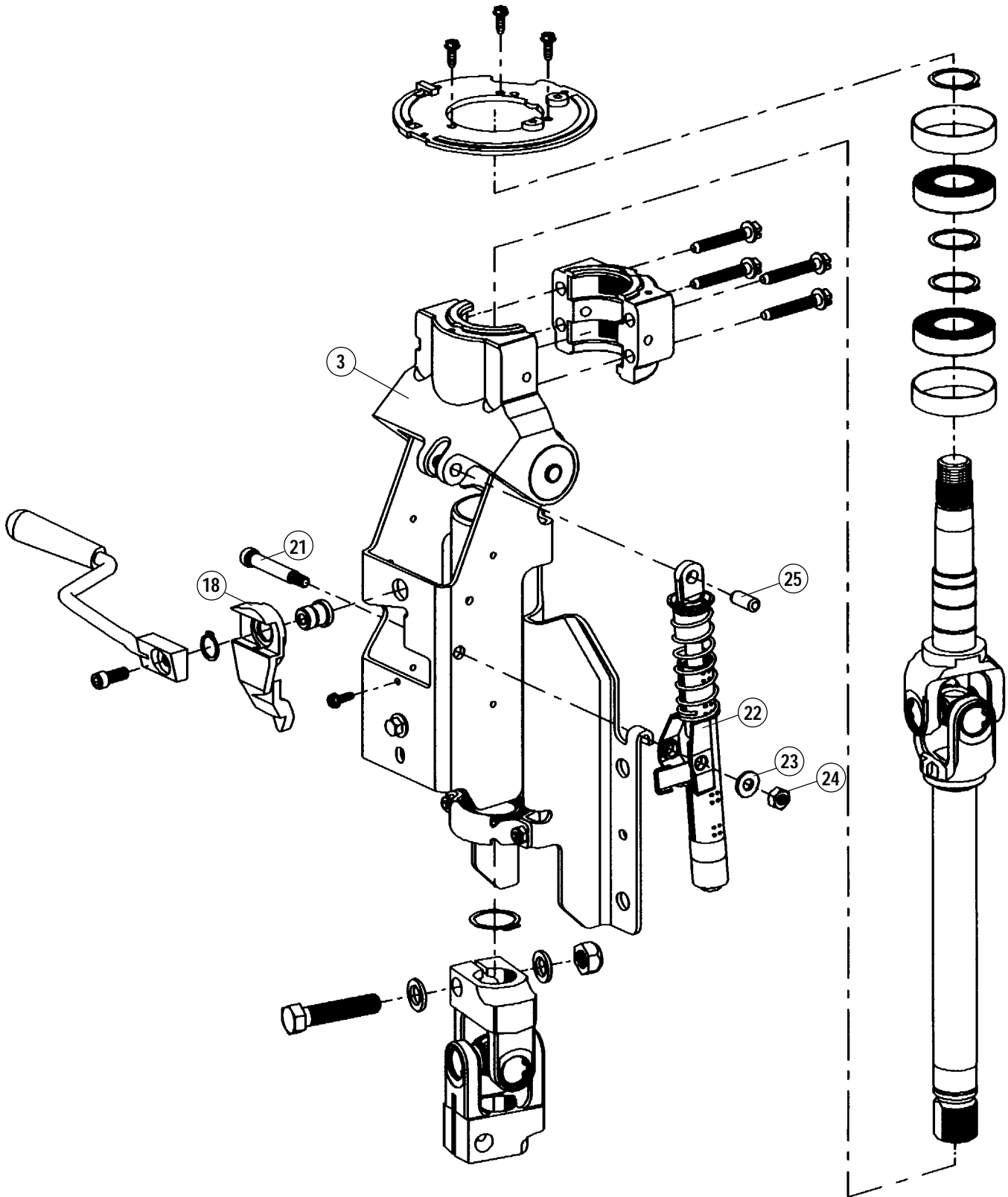
3. Remove the prevailing torque lock nut (24) and washer(23). Then use a rubber mallet to lightly tap out the shoulder screw (21).
4. Drive the tilt pivot pin (25) on the other end of the tilt lock mechanism (22) from the smaller hole toward the larger, with a punch. Remove the tilt lock mechanism.

5. Position the new tilt lock mechanism (22) in the base unit (3) with the spring toward the tilt housing, so the lever is exposed through the window on the base unit and to the right of the actuator cam (18).

**CAUTION** Handle the tilt lock mechanism carefully, the spring may be loaded.

6. Align the tilt lock mechanism holes with the holes in the base unit, and replace the shoulder screw (21) with the threads on the outside of the base unit. Replace the washer (23) and prevailing torque lock nut (24). Torque the nut to **72-88 lbf•in**.
7. Replace the tilt pivot pin (25) through the other end of the tilt lock mechanism (22). Carefully line up the tilt pivot pin with the holes, and use a punch to tap the tilt pivot pin into place until it stops.

**CAUTION** The tilt pivot pin must be fully seated, not just pressed flush with the boss. If the tilt pivot pin is not seated properly, the tilt function may cease to operate.



TRW Commercial Steering Division  
P.O. Box 60  
Lafayette, IN 47902  
Phone: 317.423.5377  
Fax: 317.429.1868

